



A Message from the President

Dear Members,

By now I hope news has reached you of the successful outcome of the Royal Society of Tasmania mediation session held on Friday 26 November at the Law Society Council Room in Hobart with representatives from the Tasmanian Museum and Art Gallery, regarding the **RST Art Collection**. It has been agreed that of the artworks in the dispute, 684 artworks are to be acknowledged as belonging to the RST (noting that this number includes two sketchbooks containing 89 and 46 works respectively, and one album containing 88 works, making a total of 904 artworks), and two additional works acknowledged as being jointly owned by RST and TMAG. In relation to one other set of works, the fish illustrations by Louisa Anne Meredith, we have agreed to disagree and to find a way to resolve that dispute at a future date.

This is a very important milestone in the history of the Society. Our Art Committee is hard at work on plans for the conservation and future exhibition of artworks in the collection.

The Society's newest publication, *An Illustrated Checklist of Tasmanian Beetles* prepared by Dr Simon Grove, Lynne Forster and Dr Nick Porch is now available for purchase from our office and through the online shop on our website. The new lined notebooks featuring cover images from the RST Art Collection will be available very soon, and we will let members know when they arrive from the printer. It has been a very busy year for the Society's Hon. Editor and Publications Committee, and we thank them for all their hard work.

I would like to offer a warm welcome to **new members** Prof John Church FAA FTSE, Mrs Andrea Gerrard OAM, Mr Danny Gillespie and Ms Susan Henn. I hope you enjoy your involvement with the Society and look forward to seeing you at events.

I have some dates for your diary in 2022:

- In an event held jointly by the RST and Friends of TMAG, Dr Simon Grove will deliver a **floor talk** on *An Illustrated Checklist of Tasmanian Beetles* in the Central Gallery at TMAG, Hobart at 10:30 a.m. on 23 February.
- Our Northern Branch invites you to the first lecture of the **2022 Launceston Lecture Series** on 27 February, 1:30 pm at QVMAG Inveresk. Dr Kimberley Norris will present a talk titled: 'From Antarctica to Outer Space: the psychology of extreme environments'.
- On Monday 7 March 2022, Prof Kate Warner AC and Government House Official Secretary David Owen will present an illustrated lecture on their recent book, *Government House Tasmania: A Remarkable Story*. This will follow the AGM to be held at 4 pm at the Royal Yacht Club of Tasmania, Hobart.
- **The Royal Society Medal Lecture** will be delivered by Dr Eric Ratcliff OAM at Government House, Hobart on 30 March 2022. This event will be hosted by

Contents:

- 2 [2022 Hobart Lecture Series](#)
- 3 [2022 Northern Branch Lecture Series](#)
- 4 [Northern Branch lecture: *From Antarctica to Outer Space*](#)
- 5 [An Illustrated Checklist of Tasmanian Beetles](#)
- 5 [Launch of An Illustrated Checklist of Tasmanian Beetles](#)
- 6 [Honorary Life Membership Awards](#)
- 6 [RST Council and artworks collection](#)
- 7 [Certificate of Appreciation to James Crotty](#)
- 7 [Prof Greg Lehman presentation](#)
- 8 [RST Christmas Dinner photos - 1](#)
- 9 [RST Christmas Dinner photos - 2](#)
- 10 [New RST publications as ideas for Christmas gifts](#)
- 11 [RST books and papers with member discounts](#)
- 12 [RST Office contact information](#)
- 12 [2022 Membership Renewal](#)
- 12 [Exciting Christmas shoppers' news](#)
- 13 [RST Library information](#)
- 14 [Victoria amazonica](#)
- 14 [Victoria amazonica – part 2](#)
- 14 [Presentation Ceremony for Tas Science Talent Search](#)
- 15 [Antarctic Expeditioners Tackle the World's Chillest Conservation Project](#)
- 16 [Iodine Deficiency Symposium](#)
- 17 [TMAG links and information](#)
- 17 [Links to RST social media](#)
- 17 [Donate to our Society](#)
- 17 [General Society contact information](#)

our Patron, Her Excellency the Honourable Barbara Baker AC, Governor of Tasmania, and will be for RST members only.

Warmest thanks go to all who have contributed to a very busy and successful year for the Royal Society of Tasmania. On behalf of the Council, I wish you a safe and happy Festive Season.

Warm regards,



Mary Koolhof, President



The Royal Society of Tasmania

2022 HOBART LECTURE SERIES

LECTURES COMMENCE AT 3:00* PM

– ONLINE OR AT OUR RST ROOMS (OR AS ADVISED BELOW)

***START TIME VARIES AS SHOWN BELOW**

PRELIMINARY PROGRAM

FEBRUARY 23	Dr Simon Groves	<i>'An Illustrated Checklist of Tasmanian Beetles – A Floor Talk'</i> presented jointly with the Friends of TMAG. – 10:30am in the Central Gallery of TMAG.
** ANNUAL GENERAL MEETING 7 March 4–6 pm **		
MARCH 7	Prof Kate Warner AC and David Owen	'Government House Tasmania – a remarkable story' – 4pm at the Royal Yacht Club of Tasmania, Sandy Bay. The Lecture follows the AGM of the Society.
MARCH 30	Dr Eric Ratcliff OAM	RST Medallist presentation and address – Medal presentation by Her Excellency, the Honourable Barbara Baker AC, Governor of Tasmania, at Government House at 6pm.
APRIL 3	Dr Lisa Gershwin	'Jellyfish Blooms and the Future of the Ocean' – 3pm at the RST Rooms.
** PROPOSED JOINT MEETING WITH THE GEOLOGICAL SOCIETY OF AUSTRALIA, May 1 **		
* PROPOSED JOINT MEETING WITH THE AUSTRALIAN ACADEMY OF TECHNOLOGY AND ENGINEERING, Mid-June *		
JULY 14	Mid-Winter Dinner	Celebrating the Royal Society of Tasmania's Art Collection – 6pm at the Royal Yacht Club of Tasmania, Sandy Bay.
AUGUST 7	Speaker: TBA	Doctoral Award Winner – Presentation and Lecture – 3pm at the RST Rooms.
AUGUST 25	Speaker: TBA	Joint Beer Aquatic Event for National Science Week – 6pm at Hobart Brewing Company. Time TBA.
SEPTEMBER 4	Speaker: TBA	Doctoral Award Winner – Presentation and Lecture – 3pm at the RST Rooms.
OCTOBER 2	Assoc Prof Rebecca Carey	M.R. Banks Medal Lecture – 3pm at the RST Rooms.
NOVEMBER 6	Speaker: TBA	Topic: TBA
DECEMBER 8	TBA	Christmas Dinner and Lecture – 6pm at the Royal Yacht Club of Tasmania, Sandy Bay.



The Royal Society of Tasmania – Northern Branch

2022 LAUNCESTON LECTURE SERIES

LECTURES COMMENCE AT **1:30* PM**

– ONLINE OR AT QVMAG @ INVERESK (TO BE ADVISED)

***START TIME VARIES AS SHOWN BELOW**

PRELIMINARY PROGRAM

FEBRUARY 27	Dr Kimberley Norris	‘From Antarctica to Outer Space’ – the psychology of extreme environments and their relevance to human health and performance.
** ANNUAL GENERAL MEETING 1:15 pm, March 27 **		
MARCH 27	Kathryn Medlock	‘Sharing the bounty’ – the fate of a single thylacine (<i>Thylacinus cynocephalus</i>).
APRIL 24	Dr Indrani Mukherjee	‘Understanding Early Earth Environments’ – a powerful approach providing key clues to evolution of life on Earth and beyond!
MAY 22	Andrew Bishop	‘A Brave New Biosecurity System: Over the Horizon Musings’ – intelligence gathering, robotics, surveillance, data analysis, molecular tools, and ‘out-of-this-world’ diagnostics.
JUNE 26	Dr Charles Connor	‘Identifying the source with Forensic Science’ – testing for biological material and DNA profiling in Tasmania.
JULY 24	Dr Raj Eri	‘Personalised Medicine: are we there yet?’ – the latest examples from genomics and microbiome research will illustrate how personalised medicine will be a reality in the near future.
** JOINT MEETING WITH THE GEOLOGICAL SOCIETY OF AUSTRALIA, August 14**		
AUGUST 14	Dr Peter McGoldrick	‘Tasmania’s oldest fossil’ – what a palaeontologist from New Jersey, a 19th century Irish rebel, some of the bloodiest battles of the American Civil War and 1.4 billion-year-old fossils from the Tarkine have in common.
AUGUST 28	Speaker: TBA	Topic: TBA
SEPTEMBER 25	Dr Alison Trimble	‘School Principals and School Law’ – the impact of Education Law on the work of Tasmanian education leaders and schools.
OCTOBER 23	Dr Mike Pook	‘Living with climate variability - the Tasmanian experience’ – Long-term climate change is constantly in the news but the much stronger signal of climate variability is rarely mentioned. Tasmania is an ideal location in which to study climate variability on a range of geographical and time scales and to investigate the dominant drivers.
NOVEMBER 27	Shane Fitzgerald, City of Launceston Director of Creative Arts & Cultural Services	QVMAG Staff Lecture Topic: TBA

RST Northern Branch

requests that you to put this lecture date into your diary

From Antarctica to Outer Space

– the psychology of extreme environments and their relevance to human health and performance

presented by Dr Kimberley Norris

Where: Meeting Room, QVMAG at Inveresk

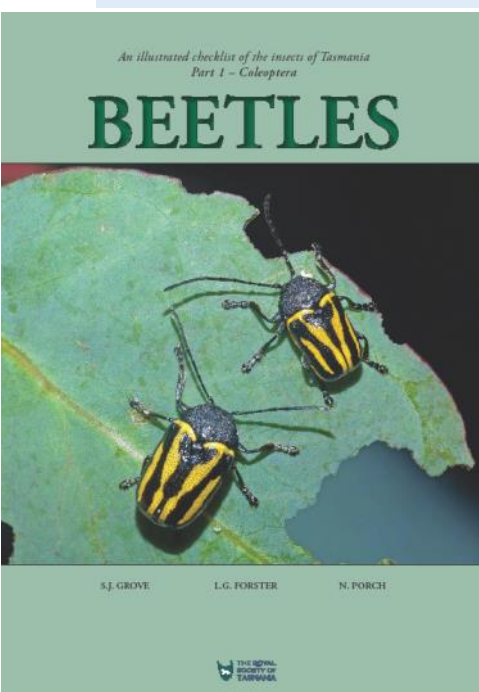
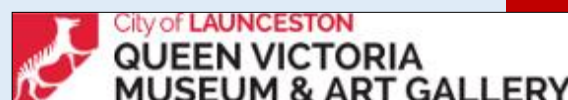
When: 1:30 pm Sunday 27 February 2022

Admission: Free for members, \$6 general admission, \$4 students, QVMAG Friends and members of Launceston Historical Society.

Biography:

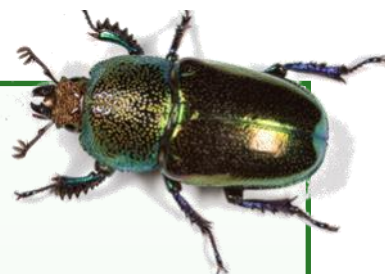
Associate Professor Kimberley Norris is a psychological scientist and clinical psychologist who works across academic, research and clinical practice settings. Her overarching research and academic interests are focused on maximising human health, wellbeing and performance in both normal and extreme environments. Her research interests include adaptation and resilience in both extreme (e.g. Antarctica, space and FIFO) and more normative (e.g. academic, life events) environments. Through her work, Kimberley develops new and innovative ways to provide psychological support for individuals in remote, rural, maritime and extreme environments at an individual, organisational and relationship level.

Generously supported by



An Illustrated Checklist of Tasmanian Beetles

by Simon Grove, Lynne Forster
and Nick Porch



This beautifully presented Checklist is an updated catalogue of all the described species of Coleoptera (beetles) from Tasmania, including Macquarie Island.

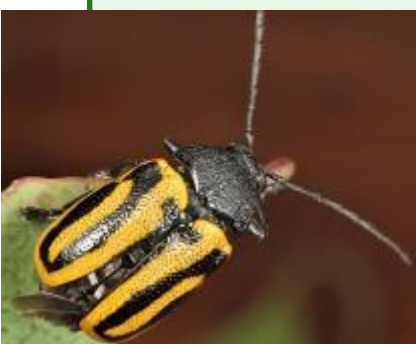
It continues a long tradition of developing insect checklists with relevance to Tasmania which goes back to 1842 when W.F. Erichson published (in German) his 'Contribution to the Insect Fauna of Van Diemen's Land', covering 287 beetle species. Our knowledge has advanced significantly since then as specialists have continued to unravel the origins and connections of Tasmania's beetle fauna with more intensive fieldwork and taxonomic studies.

This latest work, indexed to 110 pages, provides an overview of the history of Tasmanian beetle checklists, methods and taxonomic protocols used in their classification and a meticulous up-to-date list of 2,864 species including over 600 endemics. A series of beautiful

colour plates feature at least one representative species from almost every family, with each grouping headed by a thumbnail image for easy referencing.

Compiled for the scientific community by Simon Grove, Lynne Forster and Nick Porch, this Checklist will also appeal to those fascinated by Tasmania's rich beetle fauna and a desire to learn more. [Purchase now.](#)

Left: Leaf beetle. Image courtesy tas_www.projectnoah.org
Right: Image from tasmanianinsectfieldguide.com

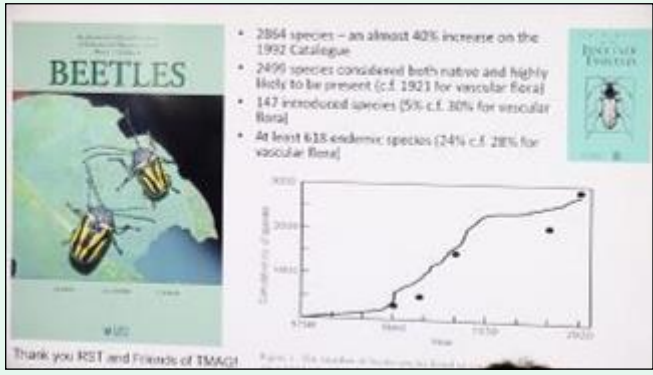




Launch of *An Illustrated Checklist of Tasmanian Beetles*

created by Simon Grove, Lynne Forster and Nick Porch at the RST Christmas Dinner.

RST Hon. Editor, Dr Sally Bryant, (pictured left with the new book) proudly launched the book on behalf of the Society and introduced author, Simon Grove, (pictured right) who engaged the audience with the pleasures of the new book about the Coleoptera species of beetles. The creation of the book was generously supported by both the RST and the Friends of TMAG.



Left: A slide from Simon's PowerPoint presentation.

[Purchase checklist.](#)

Awards of Honorary Life Membership of The Royal Society of Tasmania

For their exemplary and intensive research over many, many months that lead to the clear proof that the Society owned at least 904 pieces of artwork stored by TMAG, the RST President, Mary Koolhof, took particular pleasure in awarding three RST members with an Honorary Life Membership of the RST: **Marley Large, Dr Anita Hansen and Prof Ross Large AO**. All Royal Society members will forever be deeply grateful and indebted to Anita, Marley and Ross for their extraordinary contribution to the Society.





Above: Paul Westbury from TMAG arranged the artworks beautifully.

Right: President Mary Koolhof, Assoc Prof Julie Rimes and Dr Anita Hansen considering the works.

Below: Dr Sally Bryant and Roxanne Steenberg in discussion after the viewing.



Right and below right: Two very fine engravings of Meissonier's favourite subject, Napoleon and his troops.

Below left: Prof Ross Large AO and Peter Manchester.



The Royal Society of Tasmania Certificate of Appreciation



This rarely awarded certificate was presented at the RST Christmas Dinner to **James Crotty**, the Society's Honorary Solicitor, for his significant contributions to the Society during the recent dispute over the artworks collection.

The Society is deeply grateful to James for his constant guidance, support and expertise.



Left: RST President Mary Koolhof took great pleasure in presenting James Crotty with the Certificate of Appreciation for his commitment to the Society.

Prof Greg Lehman Keynote Speaker at the RST Christmas Dinner

The idea of Australia as an 'empty land' was dismissed by The Australian High Court in 1992. However, the implication of terra nullius as a rationale for British occupation of Aboriginal territory persists, largely unrecognised, in our colonial archive. Art Historian and Pro Vice-Chancellor Aboriginal Leadership at UTAS, Prof Greg Lehman illustrated a dramatic example of this in the visual history of Van Diemen's Land particularly drawing on the works of John Glover which have



become emblematic of the colonial landscape of Van Diemen's Land. However, Glover's landscape paintings were made after removal of Aboriginal people from their homelands during the Black War that persisted in the colony from 1824 to 1831. To date, there has been no recognition that prior to Glover's work, Aborigines were almost completely absent from Tasmanian landscape painting or portraiture.

Lehman examined the work of artists who documented the colonies of New South Wales and Van Diemen's Land from 1808 to 1831, a record of colonial development that profoundly influences our understanding of Australian history and geography. He raised questions

about the unexplained absence of Aborigines in the artists' Van Diemen's Land views at a time when Palawa were a regular presence in the lives of colonists, and an increasing source of conflict as they resisted British settlement.

Above and right: Prof Greg Lehman is introduced and later thanked by President Mary Koolhof for his thought-provoking and insightful presentation to the Society members.





Enjoying the pleasures of the Festive Season and this RST event were:

Above left: Bruce Longmore and Sue Drake.

Left: Elizabeth Archer with Peter Lelong.

Below left: Bruce and Suzanne Cameron.

Below: Caroline Mordaunt and RST Office Manager Ruth Mollison.



Below left: Justice Chris Webster AM converses with Alison Parsons and Michael Loughhead.

Below right: Secretary of the Friends of TMAG, Julie Hawkins, sat at the head table.





Above left: Prof Jocelyn McPhee with Grady Koolhof. **Above right:** Peter Dowling converses with Suzanne Skira.
Below left: Keith and Suzanne Anderson (seated left) deep in conversation.
Below right: Peter Watson enjoys chatting with Kaye Volkman.



Below left: Dr Richard and Dr Victoria von Witt. **Below right:** Margaret Malpas and husband, Prof Jeff Malpas, engaging in conversation with guests on either side of them.



Left: Polly Foster, Rosemary Scott and Dr Anita Hansen.



RST Publications are Great Ideas for Christmas Gifts!

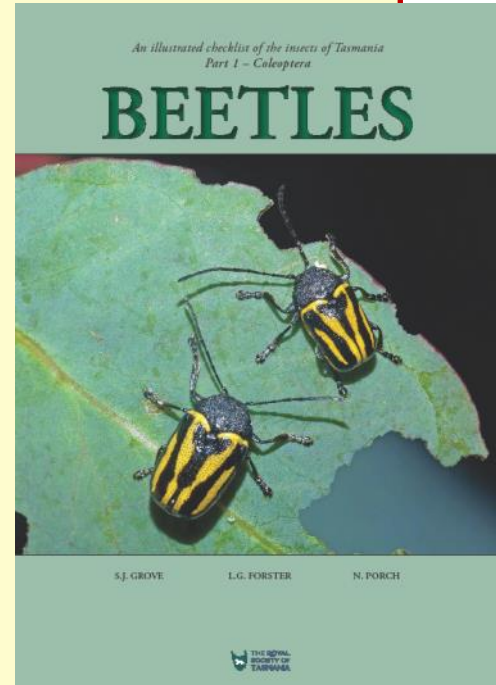
Three new publications are available to add to your reading list or Christmas shopping and if you missed out on your copy of *Australian Mineral Discoverers*, a second print run has arrived.

All items below are available for purchase online via the [RST Shop with some offering a membership discount](#).

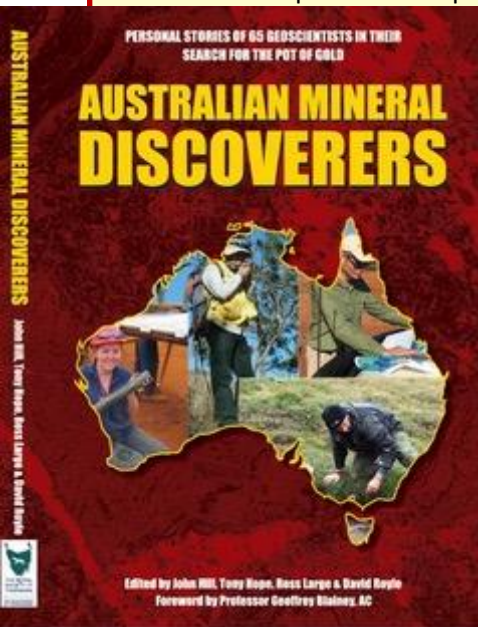


RST Notebooks featuring a choice of three cover images from the Society's rare art and book collection (- see cover at left), will be on sale shortly in lieu of the long-standing RST calendar which is not being produced for 2022. Beautifully bound and presented, these prestigious notebooks are ideal for meeting notes or creative writing, so why not buy yourself a couple or as gifts for others?

An Illustrated Checklist of Tasmanian Beetles, prepared by experts Simon Grove, Lynne Forster and Nick Porch (- see cover at right), is an exciting new taxonomic guide to Tasmanian beetles with diagnostic information on nearly 3000 species, including over 600 endemics and seven species found only on Macquarie Island. Featuring thumbnail images of every group and 16 full colour plates, this fantastic new resource will help you identify and learn more about Tasmania's enigmatic beetle fauna. \$46 [Purchase now](#).



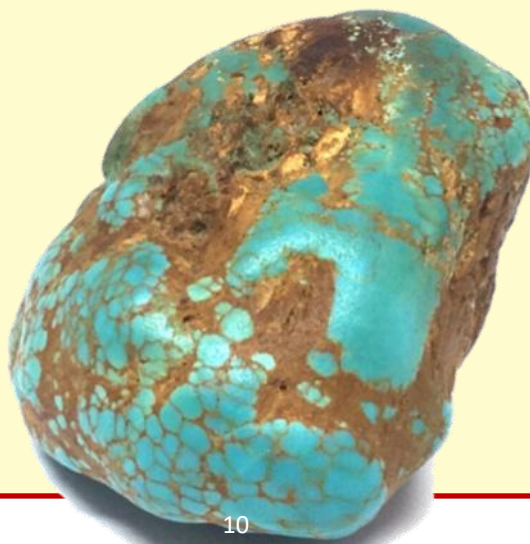
Following Volume 155(1) celebrating the RST Northern Branch centenary in June 2021, the RST Journal **Papers and Proceedings Volume 155(2)** will be published in December featuring the transcripts of speakers at the historic *Apology to Tasmanian Aboriginal people*, as well as a diverse range of scientific and review papers of wide interest. Your copy will be automatically posted if it's selected as part of your annual RST membership. Otherwise volumes can be purchased separately until sold out.



Australian Mineral Discoverers: 1950-2010 first published in December 2020 has now been reprinted. Edited by John Hill, Tony Hope, Ross Large and David Royle, this book features the biographies of 65 Australian mineral explorers and educators. Their stories show that the discovery of buried minerals is an extremely complex science, requiring knowledge, innovation, disciplined application of geological principles, teamwork, persistence and luck. **\$60.00 full price**
RST members' discount on this item @ \$50.00

For overseas orders, please contact the Society directly to calculate postage and place the order: admin@rst.org.au

For orders of more than one copy, please contact the Society direct:
admin@rst.org.au



Royal Society Office

The Royal Society office is open on Wednesday mornings 9:00 am to midday. Enter the Custom House building from the **Davey Street entrance and register at the Visitors' Desk**. TMAG's Safety Plan requires all visitors' details to be recorded or use the QR code.

A phone call prior to your visit will help with more speedy arrangements.

Please phone between the hours of 9:00am – 12 noon on a Wednesday morning on 03 6165 7014.

Main contact:

GPO Box 1166

Hobart TAS 7001

Email: admin@rst.org.au

Northern Branch contact:

Christine Beswick, Secretary:

0417 330 118

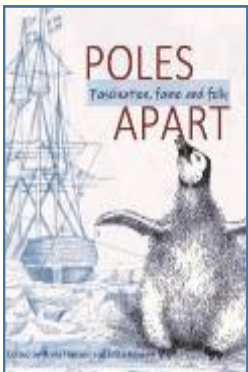
PO Box 47 Perth TAS 7300

Membership forms and renewals can either be posted to the Post Box (see above) clearly marked 'Royal Society of Tasmania' or completed and emailed to the address above.

Book and calendar sales are available either through the RST shop, on our [website](http://www.rst.org.au), by email or by phone through the office.

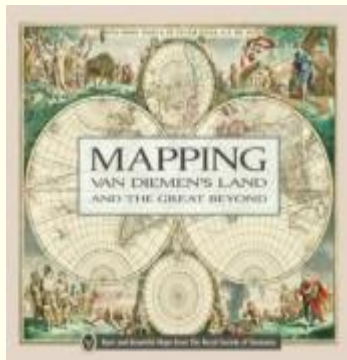
10% discount for Members on these books.

Discounted prices for members are shown beside each book:



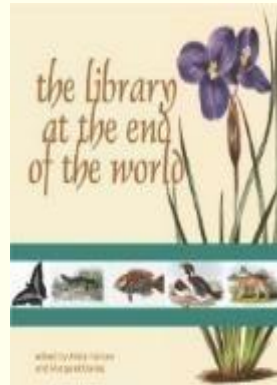
Poles Apart: Fascination, Fame and Folly

Hardcover (\$22.50) and Softcover (\$13.50)



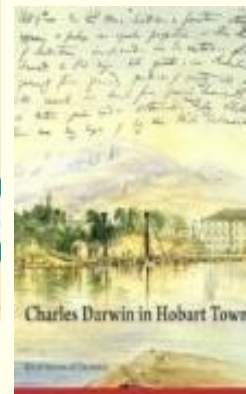
Mapping Van Diemen's Land and the Great Beyond

Hardcover (\$54) and Softcover (\$36)



The Library at the End of the World

Hardcover (\$54) and Softcover (\$36)



Charles Darwin in Hobart Town

Softcover (\$32)



Papers and Proceedings

Since 1849, the Society has published annual volumes of refereed scholarly papers. The *Papers and Proceedings* publishes research that focuses on Tasmania or is particularly relevant to Tasmanians.

Personal subscription to the *Papers and Proceedings* are made through membership of The Royal Society of Tasmania. Prices for back editions of *Papers and Proceedings* range from \$10 – \$40 per volume. Members of the Society are eligible for a

10% discount, please contact the **Honorary Editor** at editor@rst.org.au



Special publications still available: *The Sub-Antarctic* (21 papers on various aspects of the Sub-Antarctic islands); *Aspects of Tasmanian Botany* (– a collection of botanical papers given at a symposium honouring the work of Dr Winifred Curtis AM); *Tasmanian Wilderness – World Heritage Values*.

Purchase direct from the Royal Society Office on Wednesday mornings 9:00 to 12:00 noon or email admin@rst.org.au or phone Wednesday mornings on 03 6165 7014.

RST Office Contact Information

A new email address has been created specifically for our Office Manager, Ruth Mollison: office@rst.org.au
Please now send relevant emails for attention of Ruth to this new address.

Emails for The Royal Society of Tasmania, in general, should still be sent to: admin@rst.org.au

Matters relating to RST correspondence should be sent to: secretary@rst.org.au



2022 Membership Renewal

It is that time of year again: time to renew your Royal Society of Tasmania membership for 2022. The RST membership year runs from January 1 to December 31.

Click [here](#) to open the renewal form on our website which can be downloaded as a pdf for filling in electronically.

Take note: *Regardless of the method you use to renew, by renewing your membership and paying the required membership dues, you acknowledge that you have read and agree to abide by the RST Code of Conduct as displayed on the [RST website](#).*

A copy of the Code of Conduct is available on request from admin@rst.org.au



Exciting News for RST Christmas Shoppers

The TMAG Shop is once again offering their Christmas Discount to TMAG member groups of which the RST is one.

The discount is 20% on all stock purchases (excluding Friends of TMAG memberships and RST memberships) made in the TMAG Shop. To receive the discount, members must mention that they are members of the RST and show a current membership card.

Due to the need for many of us to post away our gifts to family and friends, the discount has commenced early (as of now) and it will run through until 24 December. So take advantage of this offer to obtain fantastic gifts for family and friends.

Happy shopping!



The Society's Library



Special & Rare Collections (5th floor, Morris Miller Library at UTAS Sandy Bay campus) including TRST Library asks that all visitors and researchers comply with the following COVID-safe practices:

- Please make appointments via special.collections@utas.edu.au to assist with managing maximum occupancy requirements.
- Opening hours are 10:00 am to 5pm, Monday to Wednesday, closed for lunch 12:30 – 1:30 pm.
- Maximum occupancy of two visitors at any one time and must be adhered to.
- You are required to maintain the recommended 1.5m physical distance.
- Make sure you have had your temperature checked before entering the Library.
- Temperature checks will be undertaken at the entrance to Morris Miller Library.
- If you are not a staff member or student at UTAS, you will need to sign in on entry to Morris Miller Library to enable contact tracing.
- The Library is providing hand sanitiser, cleaning wipes and carrying out additional cleaning.
- If you are feeling unwell, please do **not** come to the Library.

Library staff will continue answering all email enquiries and can scan and email requests as needed, so if you don't wish to visit the Library in person, there is no need. We will also be quarantining material handled by researchers and other visitors for 72 hours, in line with UTAS Libraries' COVID-safe practice.

Any queries please contact special.collections@utas.edu.au

Juliet Beale, Senior Librarian, Collections
Library Services | Academic Division
University of Tasmania

Victoria amazonica



Above and below: Plates from *Victoria regia*, or, *Illustrations of the Royal water-lily* held in the Special & Rare Collections.

In 1837, German-born explorer Robert Schomburgk was conducting an exploratory expedition to British Guiana for the Royal Geographical Society when he incidentally discovered the giant waterlily now known as *Victoria amazonica*. Originally called *Victoria regia* in honour of Queen Victoria, this species captured the public imagination. It's the largest of all waterlilies with huge, circular green lily pads (up to three metres in diameter) that lie flat on the water's surface and are strong enough to support the weight of a child. Pollinated by scarab beetles, the flowers (40 cm in diameter) open as white and become pink on the second night.

The versatile architect and gardener Joseph Paxton (1803–1865) created a sensation in 1849 when he managed to coax the plant to flower while working at Chatsworth and Chiswick as head gardener for the Duke of Devonshire. The flower, with ribbed under-surface and leaves veining 'like transverse girders and supports', was Paxton's inspiration for the Crystal Palace, built for the Great Exhibition of 1851.

This celebrated plant was the subject of several dedicated monographs including the Royal Society's copy of *Victoria regia*, or, *Illustrations of the Royal water-lily* held in the Special & Rare Collections. In his seminal work, Sir William Jackson Hooker (1785–1865) first director of Kew Gardens, gives the history of the plant's discovery and its physical description, as well as the best method of cultivating the plant in temperate rather than tropical climates.

Published in 1851, the elephant folio (68 cm) features plates of cultivated specimens by Walter Hood Fitch (1817–1892) which received critical acclaim in the *Athenaeum* for their accuracy and beauty. Fitch had been working as a pattern drawer in a textile mill in Glasgow when his talents were spotted by Hooker, the editor of *Curtis's Botanical Magazine*, and so Fitch's career of over forty years as their chief





botanical illustrator began, with over 9,000 drawings produced.

This natural wonder is still grown at Kew and can be seen in the Waterlily House (the hottest and most humid of all the glasshouses) in the summer months. Designed specifically to showcase the giant Amazon waterlily, it was completed in 1852 and is now a listed building.

Victoria regia, or, Illustrations of the Royal water-lily: in a series of figures chiefly made from specimens flowering at Syon and at Kew / by Walter Fitch; with descriptions by Sir WJ Hooker, London: Reeve and Benham, 1851.

Available at Morris Miller-Royal Society Rare-EFolio (QK 495 .N97 F58 1851)



Above left: Image courtesy of worldoffloweringplants.com. **Above right:** Image courtesy of faidateingiardino.com.

Presentation Ceremony for the Tasmanian Science Talent Search



The Society was a sponsor for the 2021 Tasmania Science Talent Search (TSTS). The awards were presented in two sessions at The Stanley Burbury Theatre, University of Tasmania, Sunday 28 November. The Honorary Secretary of the Society, Marley Large, attended the first of these sessions and presented the awards in the Photographic Essay, Scientific Essay and the Video sections. These entrants ranged from Lower Primary Grades (3–4) to Intermediate Secondary Grades (9–10). The presentations were attended by many of the recipients and their proud parents who were treated to snippets of some of the very fine entries.



Above: Brothers Reuben and Zachary Allen receiving their award for *Factors that affect vegetation flammability*.

The theme this year was  **Food: Different by Design.**

The children created some very innovative and entertaining strategies to highlight this theme. An effective PowerPoint demonstration was provided by young brothers Reuben and Zachary Allen who also won an award for their entry, *Factors that affect vegetation flammability*.

The event was ably hosted by RST member and Director of the Tasmanian Science Talent Search, Dr Deborah Beswick.

The members of the Science Teachers Association of Tasmania are to be congratulated for their support and encouragement of our science students. Their efforts resulted in the TSTS receiving in excess of 1,100 entries this year.

Next year's theme is *Glass: More than meets the eye*.

Marley Large



Above: Three students from Corpus Christi Catholic School who won their section with a video, *Healthy Eating*.



Antarctic Expeditioners Tackle the World's Chillest Conservation Project

A team of conservation experts will venture to Australia's remotest Antarctic outpost to carry out works on the relics of our first Antarctic expedition. One hundred and ten years since Douglas Mawson set sail from Hobart, the 2021/22 Mawson's Huts Foundation expedition will spend five

weeks in one of the harshest environments on Earth in a bid to ensure the survival of the wooden huts they left behind.

Mawson's Huts are a collection of wooden buildings constructed by the 1911–14 Australasian Antarctic Expedition at Cape Denison, 2,500km south of Hobart. Mawson is best remembered for his lone trek of survival across the polar icecap after the death of two companions on a sledging journey. He arrived back at the hut only to see his relief vessel sail north over the horizon without him, leaving him stranded for another year. The huts' site is largely untouched since Mawson and his men left it and is a listed heritage site.

The place he dubbed "the windiest place on Earth" for its constant blizzards is so hard to get to that it has not been visited by an expedition for six years. The team will camp on the Antarctic coastline hundreds of kilometres from the nearest Australian base. There are no showers or laundry facilities, so they will melt ice for water while the camp toilet arrangements are best described as "basic".

Chosen for their ability to thrive in the extreme cold and isolation of Cape Denison, the team is being supported by a grant from the Australian Government and logistical support from the Australian and French Antarctic programs. They will take advantage of the 24-hour sunlight during the Antarctic summer to complete a program of conservation works, erect an automatic weather station and conduct surveys of the area's penguin population.

Mawson's Huts Foundation CEO Greg Carter said:

"Mawson's Huts are Australia's most important historic site in Antarctica. The team's work this summer will help ensure these examples of our priceless Antarctic heritage are preserved for the future. This work is not possible without the generous support of the Australian and French Antarctic programs and the support of the Foundation's many donors and volunteers."

Expedition leader Marty Passingham stated:

"Antarctica is never predictable. On previous trips, we've faced winds of over 100km/h, blizzards that went for days and temperatures down to minus 20. It can be a challenging place to live. The work we're doing this summer is the culmination of 14 visits to the site over two decades. This work is integral to the buildings' survival."

The team is comprised of both Antarctic veterans and newcomers. They are in hotel quarantine and will depart Hobart aboard the French Antarctic program vessel *L'Astrolabe* at the end of the week. The team is expected to return in late January.

The team is: expedition leader Marty Passingham of Hobart Tasmania; conservation team leader Ian Godfrey of Perth, Western Australia; materials conservators Karina Acton and Eoin O'Suilleabhain of Sydney; expedition doctor Roger Booth and base camp manager David Killick, both of Hobart.

Foundation CEO Greg Carter and expedition members are available for interviews prior to departure and during the expedition. Contact: Greg Carter 0411 484 101 or greg.carter@mawsons-huts.org.au

Further information at: www.mawsons-huts.org.au

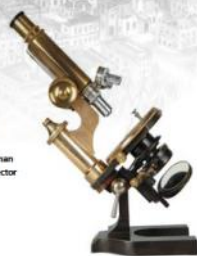


IODINE DEFICIENCY SYMPOSIUM

THE STATUS OF IODINE IN TASMANIA

Symposium will be opened by Her Excellency the Honourable Barbara Baker AC, Governor of Tasmania

9 April 2022
PEPPERS
SILO HOTEL



A landmark symposium will be presented in Launceston featuring Australia's leading researchers in the field of Iodine Deficiency. A full day Symposium with keynote speaker Professor Creswell Eastman will be followed by a dinner with guest speaker Dr Mark Veitch - Director of Public Health, Tasmania.

On Sunday there will be a Medical Walk in Launceston followed by a tour of the Launceston Whisky Distillery & BBQ Lunch.

For registration [CLICK HERE](#)

Please Note: Registrations close 1 April 2022

In the event that due to COVID restrictions the Symposium is cancelled a refund will be made as per instructions above.

Symposium Secretariat - The Clifford Craig Foundation

admin@cliffordcraig.org.au



The Status of Iodine in Tasmania a Medical History and Research Symposium 9 April, 2022

"The Status of Iodine in Tasmania" Symposium Event on 9 April 2022 is a landmark seminar showcasing a variety of presentations on iodine deficiency in Tasmania, its history, management and academic research in the 21st century. Our keynote speaker and Plenary Talks by leading experts in their fields bring together a significant number of leading academic scientists, researchers and research scholars to exchange and share their experiences and research results setting new horizons for the management of this profoundly geological disease. The symposium covers all aspects of iodine deficiency and its present status. It is a foremost integrative platform for researchers, educators and practitioners alike to witness and explore the latest innovations, trends, and concerns as well as practical challenges encountered and solutions adopted in the fields of its management.

We are pleased to present this symposium with 10 internationally recognised speakers on the subject of iodine covering its deficiency, role under climate change conditions (the Iodine Cycle – marine and terrestrial), prophylaxis, management and what the future holds for the control of iodine deficiency in Tasmania, Australia, United Kingdom and New Zealand. We are also pleased to announce that, due to COVID restrictions, the Symposium will be zoomed live internationally. A special Zoom registration is available for international interests. Our keynote speaker is Professor Creswell Eastman. Listen to his ABC interview: [The man who saved a million brains: Creswell Eastman's pioneering work with iodine deficiency disorder](#).

Biography: Professor Creswell (Cres) Eastman has led projects to abolish Iodine Deficiency Disorders (IDD) throughout the developing world. Children born to mothers deficient in iodine can suffer a range of defects including mental retardation, deafness, and speech and physical impairments.

Over the past decades, Cres and his teams have been effective in Malaysia, Laos, Thailand, Vietnam, Indonesia, China and Tibet. His transformative work with populations in remote areas of China led him to be dubbed 'the man who saved a million brains'.

During his first visits to Tibet, Cres discovered that 13 per cent of the population were born with cretinism as the result of iodine deficiency. In the course of his field work in Asia, Cres almost lost his life to altitude sickness.

Cres' current focus is on the recurring problem of IDD in Australian and Thai populations. He is concerned that IDD may be affecting the ability of Australian children, and in particular Indigenous Australian children, to perform at school. Cres has started programs in central Australia to get iodine and folate given to all Indigenous pregnant women.

[You can register here through Eventbrite](#). The full day symposium is \$80.

Registrations close on 1 April 2022

The symposium will be opened by Her Excellency, the Honourable Barbara Baker AC, Governor of Tasmania.

Associated social events include a dinner with after-dinner speaker Dr Mark Veitch, Tasmanian Director of Public Health. On Sunday 10 April there will be a tour of Launceston Whisky Distillery and BBQ lunch.

Please note: Continuing Professional Development Credits

Medical, nursing, allied Health and other professionals attending the Iodine Symposium are eligible for CPD activity points which can be self-logged post event.





Tasmanian Museum and Art Gallery

Open Tuesday to Sunday, 10:00 am – 4:00 pm until 24 December.

Visiting TMAG: It is no longer essential to book your visits to TMAG in advance, but when you arrive, you will need to register with the **Check In Tas** app: [click here to go to the Tasmanian Government website](#) to download the app.

The Museum Shop is open.

TMAG from Home initiative is available from the TMAG website to go on some exciting virtual tours, hear more from our curators and find out what happens behind the scenes.

**TMAG
from
home**

Free tours for small groups are available on Saturdays and Sundays, and run for approximately 40 minutes. Tour times are subject to change and availability and can be checked by phoning (03) 6165 7000. For guided tours for clubs, tourist groups or other organisations, please [click here](#).



TMAG Art Tour – 11:00 am on Fridays, Saturdays and Sundays Join the TMAG Art Guides for a tour of our current art exhibitions.

TMAG Highlights Tour – 1:30 pm on Fridays, Saturdays and Sundays Join the TMAG guides for a highlights tour of the treasures of the Central and Henry Hunter galleries and the historic Commissariat Complex and the Bond Store exhibitions.

Talks at TMAG

The Talks at TMAG program is currently on hold.

For further information about TMAG events, follow our social media accounts on [Facebook](#), [Twitter](#) and [Instagram](#).

For more great arts experiences in and around Hobart, visit the [Tasmanian Arts Guide](#).

Follow RST on:

Twitter



Facebook



Visit the website



Please click and scroll way down to **DONATE** to our Society. Thank you for your kind support!

Copyright © 2021 The Royal Society of Tasmania.
All rights reserved.
ABN 65 889 598 100

Society email address: admin@rst.org.au

Our Office location is:

19 Davey Street
Hobart TAS 7000

Office hours: Wednesdays 9:00 am – 12:00 pm
Phone: +61 3 6165 7014

Our mailing address is:

GPO Box 1166, Hobart TAS 7001